



Key Features

- Stocktake, Receiving, Transfers & Price Check
- Preloaded with application software
- No integration required
- Cradle and charging cables included
- Low cost
- Rugged design
- Lightweight ergonomic form factor
- Ready to use out of the box



myStore®

Are your products barcoded, but you're not using scanning to collect the data?

Replace your manual system with myStore today.

**No more manual stocktake or transfer sheets to worry about.
Just scan, dock and upload**





Many organisations have been driven to implement barcoding systems in the front end of their operations. Usually in the form of retail Point of Sale systems equipped with barcode scanners. However, other business silos, such as the warehouse, have to get the job done with paper worksheets, pen and a clipboard. myStore provides you with the same opportunity to use barcoding and data capture.

Functions

- Stock take
- Stock Transfers
- Receiving
- Price Verification

Features

- myStore can operate with or without an item data file from the host system (refer Data Exchange).
- Item Notification – Items not recognized by myStore are flagged and reported.
- Configurable file export formats to cater for different back office/host systems.
- Includes myStore Connect to configure the system
- Includes User Manual and Quick Setup Guide.



Mobile Computer - Features

myStore is deployed on a range of Symbol Technologies (Motorola) Mobile Computers including MC1000 and MC3000 devices.

- Microsoft windows CE platform.
- High speed Intel X-Scale processor.
- Simplified large keypad for ease of use.
- Flexible power options – Lithium battery or AAA batteries (MC1000 only).
- Large display (monochrome or color).
- Optional SD Card for extended memory capability.
- Ruggedized



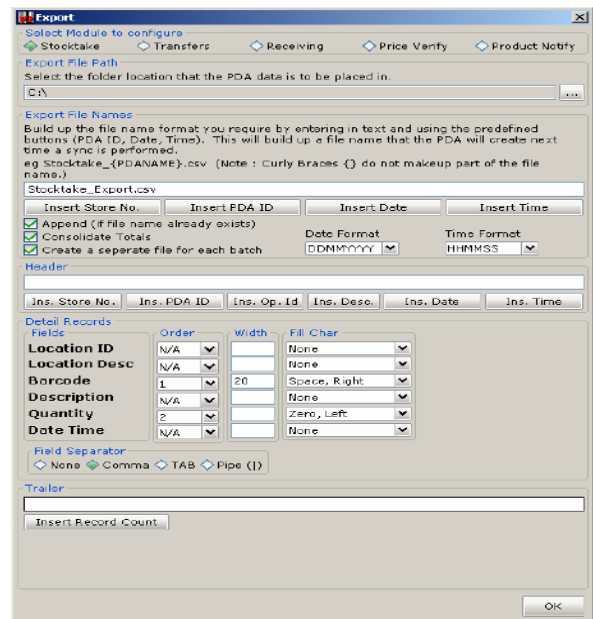
Data Exchange

myStore Lite includes 'myStore Connect' a powerful tool to configure myStore to exchange 2 way data between a host system and your data collection device (mobile computer).

myStore Lite supports the following data files which can be exported from a host system and then imported by your Mobile Computer:

- Item file
- Barcode file
- Location file

Once you have imported the data from your host system to the mobile computer any data scanned (collected) can be verified for accuracy.



myStore Lite can present the captured information to the back office/host system in a variety of formats. The 'export' process can be customized to produce files in formats that most back office systems can process. eg. ASCII, CSV or TXT. Import files into MS EXCEL or other software.

myStore Lite can also be fully integrated into your back office system if required.

For more information contact:

PULSE Logistics Systems Pty Ltd
Phone: 1800 785 730

